

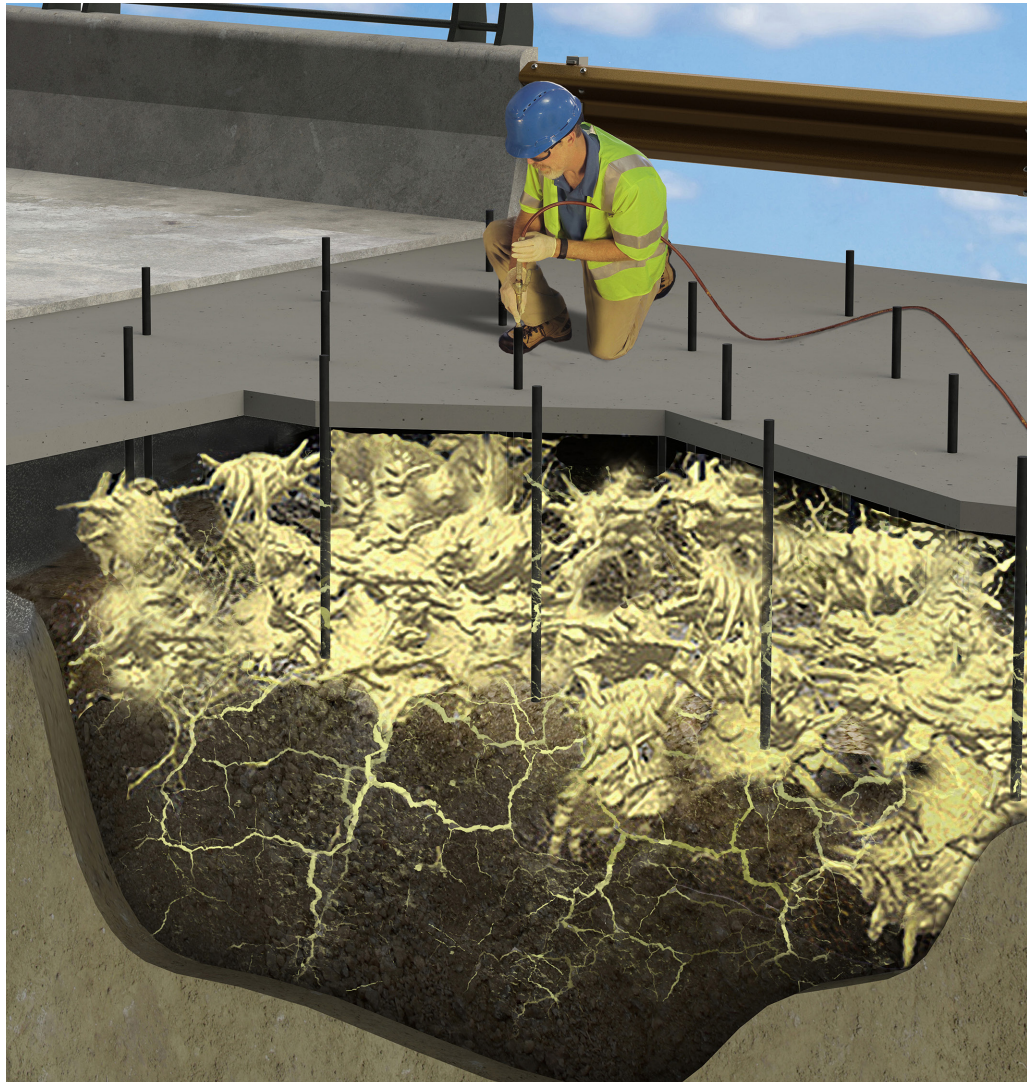
Advanced  
Geotech  
Solutions

# Geotech



## Geotech Product Catalog

Powerful Polymers  
Painless Procedures  
Rapid Results



Alchatek, LLC  
4508 Bibb Blvd, Suite B5  
Tucker, GA 30084

[Alchatek.com](http://Alchatek.com)

Alchatek

# A Worldwide Standard in Grouting

For more than 30 years, the key partners in Alchatek have been developing and manufacturing polyurethane injection resins.

Alchatek offers high-quality products for civil engineering to stabilize soil, seal leaks, and lift concrete slabs. Our products are mainly used in tunnels, mining, metro systems, excavations, dams, ground barriers and foundations.

Alchatek resins have been used in numerous projects all over the world.

Our dedicated team of well experienced engineers and technicians make sure that we offer the right solutions for your problems.



# Geotech Product Application Matrix

	AP Soil 600	AP Fill 700	AP Fill 720	AP Fill 420	AP Deep Lift 420	AP Lift 430	AP Lift 430 Fast	AP Lift 440	AP Lift 475	AP Lift 460
Permeation grouting.	•	•								
Stabilizing loose sand and soil.	•	•	•			•	•	•	•	•
Sinkhole remediation.	•					•	•	•	•	•
Filling abandoned pipes, mine shafts, etc.				•	•			•		
Filling voids.		•	•	•	•	•	•	•	•	•
Flotation foam.				•	•					
Lifting and jacking concrete slabs.						•	•	•	•	•
Lifting from deep within the soil.					•	•	•			
Compaction / Fracture grouting.						•	•		•	•
Concrete slab foundation repair.						•	•	•		
Cutting off underground water flows.		•	•							
Seawall Repair		•	•							

## Geotech **AP Soil 600**

### Moisture Activated Polyurethane Soil Stabilization Resin

AP SOIL 600 is a single component, moisture activated, hydrophobic, low viscosity, polyurethane soil grout.

#### Advantages

- One component - no catalyst required.
- Encapsulates and strengthens loose soil.
- Very low viscosity for good soil penetration.
- Watertight.
- Phthalate free (more environmentally friendly).
- Certified to NSF/ANSI/CAN 61 (Approved for contact with drinking water).

#### Field of Application

- Permeation grouting
- Stabilizing loose sand and soil
- Sinkhole remediation

#### Accessories

- Alchatek Cat 106 Item #: 106C064 (1/2 Gallon), 106C005 (5 Gallon)
- Alchatek Cat 600 Item #: 600C064 (1/2 Gallon)
- Alchatek Pump Flush Item #: 121M001 (1 Gallon), 121M005 (5 Gallon)
- Alchatek Soak 130 Item #: 130M001 (1 Gallon), 130M005 (5 Gallon)

#### Equipment

Single component electric injection pump recommended. See pages 19-20.

#### Packaging

- 5 Gallon Pails Item #: 600R005
- 50 Gallon Drums Item #: 600R050
- 250 Gallon Totes Item #: 600R250

## Geotech **AP Fill 700**

# Water-Activated Semi-Rigid Polyurethane Foam Injection Resin

AP Fill 700 is a single component, water-activated, hydrophobic, low viscosity, closed cell polyurethane injection resin.

### Advantages

- Very low viscosity.
- Water impermeable.
- Adjustable set time – as fast as 20 seconds.
- Injected as a single component.
- Phthalate free (more environmentally friendly).
- Certified to NSF/ANSI/CAN 61 (Approved for contact with drinking water).

### Field of Application

- Cutting off high flow leaks.
- Filling voids behind concrete structures.
- Cutting off underground water flows.
- Stabilizing soil.
- Seawall repair

### Accessories

- Alchatek Cat 106 Item #: 106C064 (1/2 Gallon), 106C005 (5 Gallon)
- Alchatek Cat 107 Item #: 107C032 (1 Quart), 107C005 (5 Gallon)
- Alchatek Pump Flush Item #: 121M001 (1 Gallon), 121M005 (5 Gallon)

### Equipment

Single component electric injection pump recommended. See pages 19-20.

### Packaging

- 5 Gallon Pails Item #: 700R005
- 50 Gallon Drums Item #: 700R050
- 250 Gallon Totes Item #: 700R250

# Geotech **AP Fill 720**

## Fast Reacting High Foaming Semi-Rigid Injection Resin

AP FILL 720 is a single component, closed cell, hydrophobic, water reactive, solvent and phthalate free, low viscosity polyurethane injection resin for cut-off of large water leaks and void filling around seawalls. AP FILL 720 will react and expand quickly upon contact with water.

### Advantages

- Single component.
- Different reaction times are possible by adjusting the percentage of GEN CAT or GEN CAT Fast accelerator.
- Cured polyurethane is semi-rigid and exhibits high strength and good chemical resistance. (Contact our Technical Service for chemical resistance).
- Cured polyurethane is harmless for the environment and resistant to biological attack.
- Up to 40x - 50x expansion.
- Certified to NSF/ANSI/CAN 61 (Approved for contact with drinking water).

### Field of Application

- Seawall repair.
- Chemical wall for erosion control of beachfront properties and land masses that do not have a seawall or water barrier.
- Water cut-off of large flow and high pressure water leaks.
- Stabilizations and water cut-off of large cracks, voids and gravel layers.
- Pre and post injections in mines, tunnels, pipe jacking, drill & blast and TBM applications.
- Crack and gravel layer injections in concrete structures.
- Soil stabilization and anchors in porous geology.
- Water cut-off of sewer water leaks and sewer stabilization.
- Probe grouting for below grade pipes.
- Void filling.

### Accessories

- Alchatek Gen Cat Item #: 108C005 (5 Gallon)
- Alchatek Gen Cat Fast Item #: 109C005 (5 Gallon)
- Alchatek Pump Flush Item #: 121M001 (1 Gallon), 121M005 (5 Gallon)

### Equipment

Single component electric injection pump recommended. See pages 19-20.

### Packaging

- 5 Gallon Pails Item #: 720R005
- 50 Gallon Drums Item #: 720R050
- 250 Gallon Totes Item #: 720R250

# Geotech **AP Fill 420**

## Two Component, Highly Expansive Polyurethane Foam

AP FILL 420 is a two component, high expansion, hydro insensitive polyurethane foam. Unconfined density is approximately 2 lbs/cubic foot (32 kg/cubic meter).

### Advantages

- 90% of full strength in 15 minutes.
- High expansion rate of 35x.
- Works in wet environments - displaces water.
- Bonds with soil and concrete.
- Closed cell.

### Field of Application

- Filling abandoned pipes, mine shafts, etc.
- Filling voids.
- Floatation foam

### Accessories

- Alchatek Pump Flush Item #: 121M001 (1 Gallon), 121M005 (5 Gallon)
- Alchatek Surface Guard 125 Item #: 125M005
- Alchatek Soak 130 Item #: 130M001 (1 Gallon), 130M005 (5 Gallon)

### Equipment

- Proportioning pump with heated lines. See pages 15-16.
- MixMaster Pro injection gun. See pages 13-15.

### Packaging

- 10 Gallon Unit Item #: 420S010
- 100 Gallon Unit Item #: 420S100
- 500 Gallon Unit Item #: 420S500

# Geotech **AP Deep Lift 420**

## Two Component, Highly Expansive Polyurethane Foam

Deep Lift 420 is a two component, high expansion, hydro insensitive polyurethane foam. Unconfined density is approximately 2 lbs/cubic foot (32 kg/cubic meter).

### Advantages

- 90% of full strength in 15 minutes.
- High expansion rate of 35x.
- Works in wet environments - displaces water.
- Bonds with soil and concrete.
- Closed cell.

### Field of Application

- Filling abandoned pipes, mine shafts, etc.
- Filling voids.
- Floatation foam

### Accessories

- Alchatek Pump Flush Item #: 121M001 (1 Gallon), 121M005 (5 Gallon)
- Alchatek Surface Guard 125 Item #: 125M005
- Alchatek Soak 130 Item #: 130M001 (1 Gallon), 130M005 (5 Gallon)

### Equipment

- Proportioning pump with heated lines. See pages 15-16.
- MixMaster Pro injection gun. See pages 13-15.

### Packaging

- 100 Gallon Unit Item #: 422S100

# Geotech **AP Lift 430**

## Two Component, Structural Polyurethane Foam

AP LIFT 430 is a two component, high strength, high density, hydro insensitive structural polyurethane foam. Unconfined density is approximately 3 lbs/cubic foot (48 kg/cubic meter).

### Advantages

- Traffic ready in 15 minutes.
- High strength.
- Works in wet environments - displaces water.
- Bonds with soil and concrete.
- Closed cell.
- Certified to NSF/ANSI/CAN 61 (approved for contact with drinking water).

### Field of Application

- Filling abandoned pipes, mine shafts, etc.
- Lifting concrete slabs.
- Stabilizing soil.
- Filling abandoned pipes.
- Filling voids.

### Accessories

- Alchatek Pump Flush Item #: 121M001 (1 Gallon), 121M005 (5 Gallon)
- Alchatek Surface Guard 125 Item #: 125M005
- Alchatek Soak 130 Item #: 130M001 (1 Gallon), 130M005 (5 Gallon)

### Equipment

- Proportioning pump with heated lines. See pages 15-16.
- MixMaster Pro injection gun. See pages 13-15.

### Packaging

- 10 Gallon Unit Item #: 430S010
- 100 Gallon Unit Item #: 430S100
- 500 Gallon Unit Item #: 430S500

# Geotech **AP Lift 430 Fast**

## Two Component, Structural Polyurethane Foam

AP LIFT 430 FAST is a two component, high strength, high density, hydro insensitive structural polyurethane foam. Unconfined density is approximately 2.75 to 3.25 lbs/cubic foot (44 to 52 kg/cubic meter).

### Advantages

- Filling abandoned pipes, mine shafts, etc.
- Lifting concrete slabs.
- Stabilizing soil.
- Filling abandoned pipes.
- Filling voids.

### Field of Application

- Filling abandoned pipes, mine shafts, etc.
- Lifting concrete slabs.
- Stabilizing soil.
- Filling abandoned pipes.
- Filling voids.

### Accessories

- Alchatek Pump Flush Item #: 121M001 (1 Gallon), 121M005 (5 Gallon)
- Alchatek Surface Guard 125 Item #: 125M005
- Alchatek Soak 130 Item #: 130M001 (1 Gallon), 130M005 (5 Gallon)

### Equipment

- Proportioning pump with heated lines. See pages 15-16.
- MixMaster Pro injection gun. See pages 13-15.

### Packaging

- 10 Gallon Unit Item #: 432S010
- 100 Gallon Unit Item #: 432S100
- 500 Gallon Unit Item #: 432S500

# Geotech **AP Lift 440**

## Two Component, Structural Polyurethane Foam

AP Lift 440 is a two component, high strength, high density, hydro insensitive structural polyurethane foam. Unconfined density is approximately 4 lbs/cubic foot (64 kg/cubic meter).

### Advantages

- High strength.
- Low viscosity.
- Works in wet environments - displaces water.
- Bonds with soil and concrete.
- Traffic ready in 15 minutes.
- Closed cell.

### Field of Application

- Stabilizing soil.
- Lifting concrete slabs.
- Filling voids.
- Filling abandoned pipes.
- Supplemental sinkhole remediation.

### Accessories

- Alchatek Pump Flush Item #: 121M001 (1 Gallon), 121M005 (5 Gallon)
- Alchatek Surface Guard 125 Item #: 125M005
- Alchatek Soak 130 Item #: 130M001 (1 Gallon), 130M005 (5 Gallon)

### Equipment

- Proportioning pump with heated lines. See pages 15-16.
- MixMaster Pro injection gun. See pages 13-15.

### Packaging

- 10 Gallon Unit Item #: 440S010
- 100 Gallon Unit Item #: 440S100
- 500 Gallon Unit Item #: 440S500

# Geotech **AP Lift 475**

## Two Component, Structural Polyurethane Foam

AP LIFT 475 is a two component, high strength, high density, hydro insensitive structural polyurethane foam. Unconfined density is approximately 4.75 lbs/cubic foot (76 kg/cubic meter). Also available in a slow version.

### Advantages

- High strength.
- Low viscosity.
- Works in wet environments - displaces water.
- Bonds with soil and concrete.
- Traffic ready in 15 minutes.
- Closed cell.
- Certified to NSF/ANSI/CAN 61 (Approved for contact with drinking water).

### Field of Application

- Stabilizing soil.
- Lifting concrete slabs.
- Filling voids.
- Supplemental sinkhole remediation.

### Accessories

- Alchatek Pump Flush Item #: 121M001 (1 Gallon), 121M005 (5 Gallon)
- Alchatek Surface Guard 125 Item #: 125M005
- Alchatek Soak 130 Item #: 130M001 (1 Gallon), 130M005 (5 Gallon)

### Equipment

- Proportioning pump with heated lines. See pages 15-16.
- MixMaster Pro injection gun. See pages 13-15.

### Packaging

- 10 Gallon Unit Item #: 475S010
- 100 Gallon Unit Item #: 475S100
- 500 Gallon Unit Item #: 475S500

# Geotech **AP Lift 460**

## Two Component, Structural Polyurethane Foam

AP LIFT 460 is a two component, high strength, high density, hydro insensitive structural polyurethane foam. Unconfined density is approximately 6 lbs/cubic foot (96 kg/cubic meter). Also available in a slow version.

### Advantages

- High strength.
- Low viscosity.
- Works in wet environments - displaces water.
- Bonds with soil and concrete.
- Traffic ready in 15 minutes.
- Closed cell.

### Field of Application

- Stabilizing soil.
- Lifting concrete slabs.
- Filling voids.
- Supplemental sinkhole remediation.

### Accessories

- Alchatek Pump Flush Item #: 121M001 (1 Gallon), 121M005 (5 Gallon)
- Alchatek Surface Guard 125 Item #: 125M005
- Alchatek Soak 130 Item #: 130M001 (1 Gallon), 130M005 (5 Gallon)

### Equipment

- Proportioning pump with heated lines. See pages 15-16.
- MixMaster Pro injection gun. See pages 13-15.

### Packaging

- 100 Gallon Unit Item #: 460S100
- 500 Gallon Unit Item #: 460S500

# PX-7 Mechanical Purge Gun

## PX-7 Slab Lifting Gun

The PX-7 incorporates a valving rod to mechanically purge the mixed material from the mixing module at the end of each shot; eliminates the need for solvent flushing or air purge. It comes standard with a precision machined coupling block made from high strength steel. Manufactured by Polyurethane Machinery Corporation.

### Key Features

- Economically Priced
- Mechanically Self Cleaning
- Solvent Free
- Airless Atomization
- Internal Impingement
- Machined Coupling Block
- Precision Ground, Single Piece Valving Rod
- Rebuildable Manual Valves
- Stainless Steel Hardened Gun Block
- CE Certified



Item #: PMCG01

## Concave Ports

Fits PX-7 Slab Lifting Guns

### Features

- Dimple top.
- Includes black sealing sleeve.

### Benefits

- Durable design ensures enhanced reliability.
- Sleeve seals to concrete.

Bag of 100

Item #: ACP2105



# MixMaster Pro

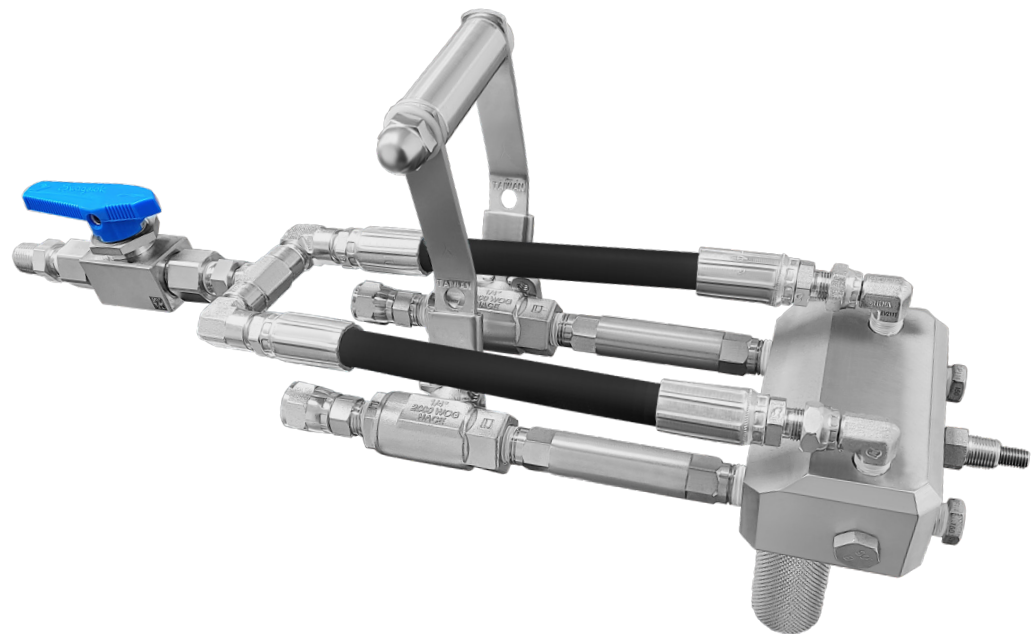
## MixMaster Pro Slab Lifting Gun

Two-component resin injection gun manufactured specifically for lifting concrete slabs, designed to handle back-pressure. As the essential piece of foam jacking equipment for Alchatek's expanding polyurethane foams, the resin injection gun provides highly-efficient concrete leveling. The attachment allows the user to stand while operating the gun.

- Completely mechanical actuation.
- No side seals or O-rings in the mixing block to replace.
- Integrated rebuildable check valves to save your whip hose.
- Easy break down and clean up at the end of the day.
- Utilizes smaller 3/8" injection port.
- Uses water based flush.
- Stainless steel block.

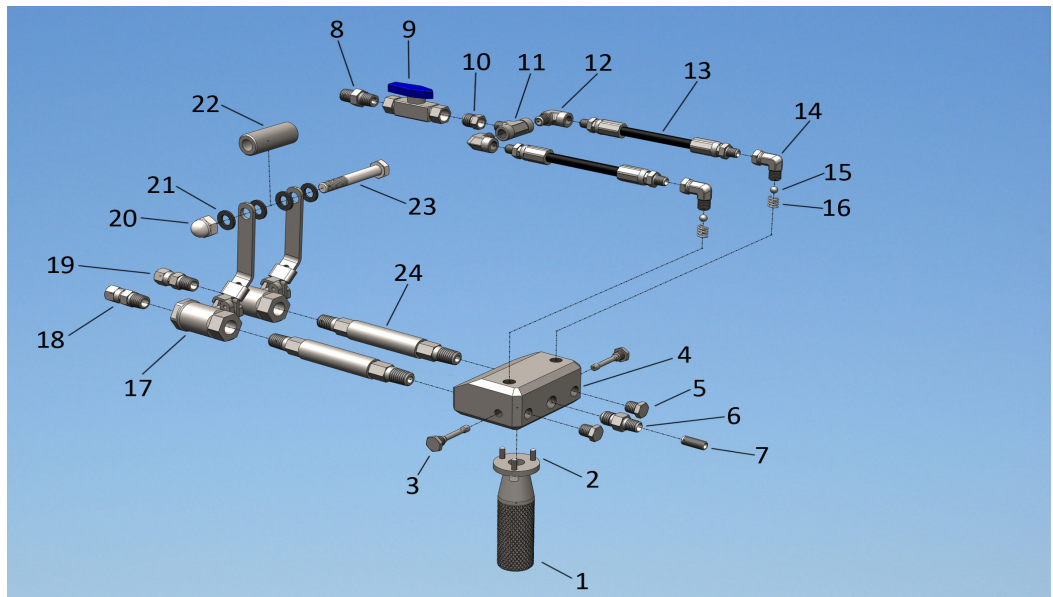
Item #: ACA600ST (Steel Gun Block)

Item #: ACA600AL (Aluminum Gun Block)



# MixMaster Pro

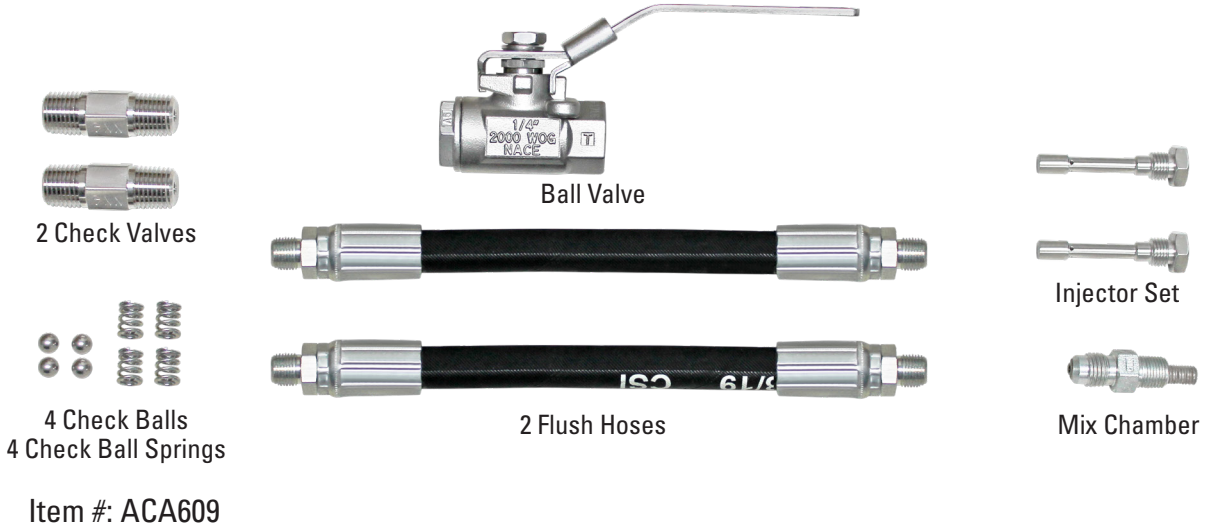
## Gun Parts Exploded View



Item Number	Number on Graphic	Description
MM215	1	Aluminum Gun Handle
MM216	2	Stainless Steel Screws
ACA603	3	MixMaster Injector Set .035" (A and B)
ACA604	3	MixMaster Injector Set .050" (A and B)
ACA605	3	MixMaster Injector Set .070" (A and B)
MM123ST or MM123AL	4	Steel Gun Block or Aluminum Gun Block
MM111	5	Hex Plug
MM103A	6 & 7	Mix Chamber for Slab Lifting
MM175	8	Flush Valve Connector
MM181	9	6,000 psi Ball Valve
MM176	10	1/4" to 1/8" Reducer
MM177	11	1/8" Branch Tee
MM178	12	1/8" Male x 1/8" Female 90° Elbow
MM172	13	Flush Hose
MM104	14	1/8" male female 90° swivel
MM112	15	Check Ball
MM118 A	16	Check Ball Spring
MM170	17	2,000 psi Ball Valve
MM174	18	#6 JIC Swivel - Poly
MM173	19	#5 JIC Swivel - Iso
MM194	20	Handle Cap Nut
MM195	21	Handle Nylon Washer
MM193	22	Handle Spacer
MM196	23	Handle Bolt
MM210	24	1/4-18 x 4" Custom Nipple - Stainless

# MixMaster Pro (Continued)

## Spare Parts Kit



## MixMaster Tapered Ports



Item #: ACA560

## Slab Lifting Pumps



PH-40 2000 psi

Output: 40 lbs/min	Maximum Hose Length: 410 ft	220 Volt
PH-40 1207A16	Size 120 Pumps, 15kw Heaters, 5HP, 1 ph	130 Amps
PH-40 1207A30	Size 120 Pumps, 15kw Heaters, 5HP, 3 ph	80 Amps
PH-40 1209A30	Size 120 Pumps, 18kw Heaters, 5HP, 3 ph	93 Amps
PH-40 1210A30	Size 120 Pumps, 21kw Heaters, 5HP, 3 ph	106 Amps

Item #: PMC P07

# Slab Lifting Pumps (Continued)



PHD Premier 2000 psi

<b>Output: 40 lbs/min</b>	<b>Maximum Hose Length: 410 ft</b>
PHD-2 2000	Size 120 Pumps, 18 kw Heaters, Triple Phase

Item #: Special Order



PHD Premier Mach 2 2000 psi

<b>Output: 40 lbs/min</b>	<b>Maximum Hose Length: 410 ft</b>
PHD-2 2000	Size 120 Pumps, 18 kw Heaters, Triple Phase

Item #: Special Order



PH-2 2000 psi

<b>Output: 28 lbs/min</b>	<b>Maximum Hose Length: 410 ft</b>
PH-2 2000	16:1 Ratio Horizontal Pumps, 10.5 kw Heaters, Single Phase

Note: The PH-2 is air driven with horizontal piston pumps. It is an excellent economical choice for low output jobs.

Item #: PMCP08



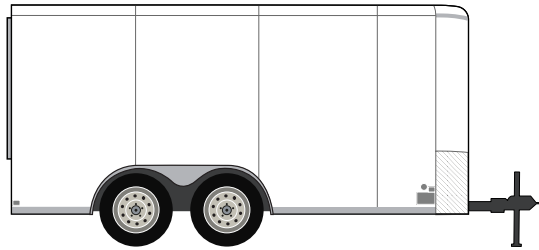
## Transfer Pump

Pressure Ratio	2.2:1
Output (Cont. Duty)	5.5 Gals/min (20.8 Liters/min)
Output (Int. Duty)	11 Gals/min (41.6 Liters/min)
Maximum Air Pressure	120 psi (8.273 bar)
Air Consumption	2.0 cfm per gallon-pumped @ 100 psi 124.67 cc/sec per liter pumped @ 689 kpa
Weight	25 lbs (11.4 kg)
Length	48.92"(1242.6 mm) Used w/55 gallon drums

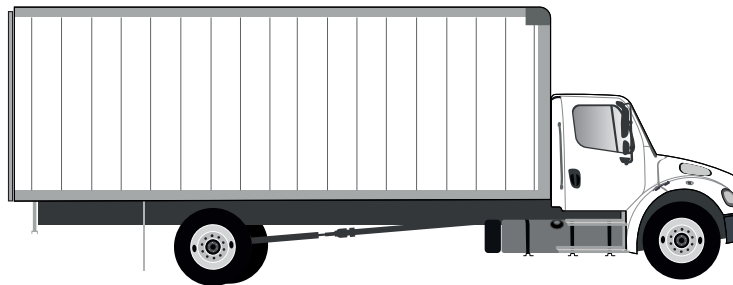
Item #: PMCP03

# Slab Lifting Rigs Trailer & Truck Series

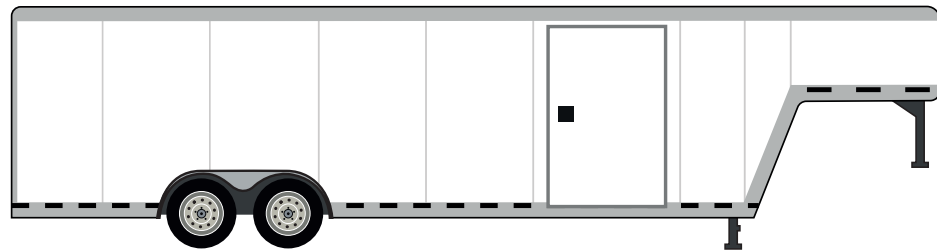
V Nose 16-20 ft



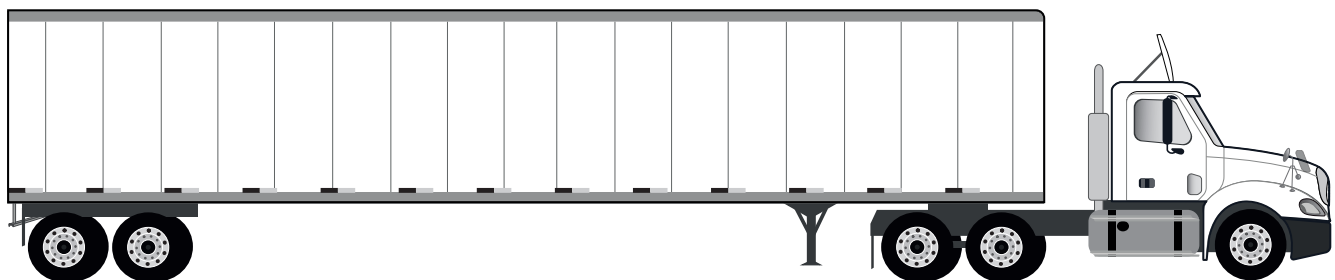
Box Truck Build-Out • 16-28 Foot (Truck Not Included)



Gooseneck • 26-36 Foot



Tractor Trailer Build-Out • 40 Foot (Truck & Trailer Not Included)



## Compact Mobile Slab Lifting

### PolyBadger Lifting System

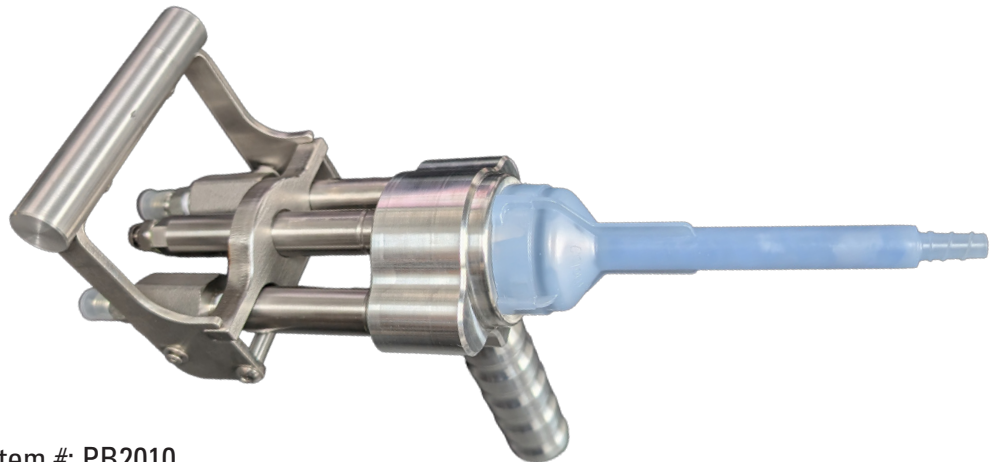


- 110V / 20 Amp Circuits - 2 required
- 11 CFM @ 90 psi air compressor
- Easily Fitted To:
  - Pickups
  - Flatbeds
  - Utility Trailers

Item #: PB2000

---

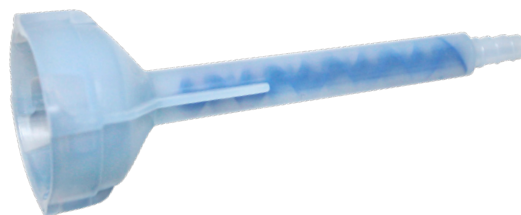
### MiniMaster Low-Pressure Gun



Item #: PB2010

---

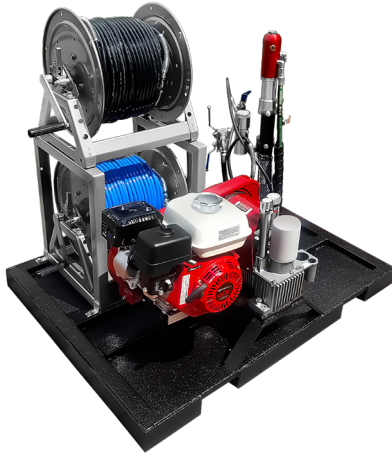
### PolyBadger Static Mixer



Item #: SFS111

# Seawall & Soil Pump Skid

## PolyShark Seawall Repair & Soil Stabilization System



The PolyShark is a custom pump skid system for installation of single-component polyurethane geotech resins. This world-class skid set up is essential for large scale seawall repair, soil stabilization, and void fill projects.

### Gas-Powered High-Pressure Injection Pump

A step up for projects that require greater power and output, this custom modified pump is our best-selling gas over hydraulic piston machine, favored by contractors who want to complete large application jobs in record time with high profit margins. The hydraulic ram fluid section is moved front and center in the configuration for easier maintenance and control.

Max. Delivery, Gas:	2.35 GPM
Max. Operating Pressure:	3600 PSI
Engine, Gas:	200 cc HP

### High-Pressure Hose Reels

High-pressure design guarantees durability when used with the high-pressure single-component pump. The construction is completely corrosion resistant and the stainless steel ball bearings, hardware, and manifolds are stronger than the aluminum parts on standard hose reels. The ball bearing-driven hose reels operate smoothly because they contain no bushings. (Bushings easily wear out.)

### Flow Meters

Two high-pressure flow meters are capable of recording the exact amount of product pushed through the hoses. This allows for precision material-use tracking.

Item #: PS1000

### Replacement Flow Meters

Two high-pressure flow meters are included with the PolyShark, and replacement flow meters are also sold separately.

Item #: PS1001

# Hoses & Hose Wraps



## 50' Heated Hose

TC or Non-TC. Pictured without scuff jacket.

TC 2,000 psi,  
Scuff Jacket Included  
Item #: PMCH02S

Non-TC 2,000 psi,  
Scuff Jacket Included  
Item #: PMCH03S



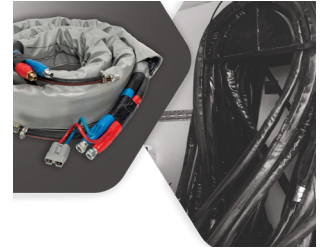
## 10' Heated Whip Hose

Pictured with scuff jacket. 1/4 x 10' whip hose assembly. 3500psi. It's always good to keep a spare on hand (like a spare tire).  
Item #: PMCH01



## 6' Non-Heated Whip Hose

Pictured with scuff jacket. 1/4 x 6' whip hose assembly. 3500psi. Includes a third high-pressure line for water supply on MixMaster Pro gun or air supply on pneumatically-actuated guns. It's always good to keep a spare on hand (like a spare tire).  
Item #: ACA900



## Sidewinder Hose Wrap

Available in both insulated and non-insulated versions, Sidewinder installs in minutes and offers unmatched hose protection from heavy abrasion, moisture, and temperature energy loss.

Coupler. Non Insulated.  
Item #: Special Order

7' length for whip hose. Non Insulated.  
Item #: Special Order

50' length. Non Insulated.  
Includes Internal Cinch Straps.  
Item #: Special Order

# Injection Pumps

## Titan Impact 440

The IMPACT 440 is an advanced airless electric injection pump that's ideally suited for residential, property maintenance and small commercial applications.

### ADVANTAGES

- Designed to consistently handle 50-100 gallons per week.
- Recommended for small and medium residential and commercial projects.

### APPLICATIONS

- Soil stabilization, void fill, and crack injection with polyurethane.
- Pre-grout injection water flush pump (water / grout pumps not to be same pump).
- Flushing Alchatek's MixMaster slab lifting gun.



Max. Delivery:	.54 GPM
Max. Operating Pressure:	3300 PSI
Weight (skid frame):	35 lbs.
Motor:	7/8 hpDC Motor

Item #: TITAN440S

# Injection & Gel Pump



## Titan Impact 640

The IMPACT 640 continues the climb to increased performance. This mid-range unit is perfect for residential, property maintenance, rental and light commercial applications and is equipped with digital technology for improved efficiency.

### ADVANTAGES

- Features DigiTrac Integrated Digital Display that includes an anti-theft lock.
- Designed to consistently handle 75-100 gallons per week.
- Recommended for small and medium residential and commercial projects.

### APPLICATIONS

- Soil stabilization, void fill, and crack injection with polyurethane.
- Pre-grout injection water flush pump (water / grout pumps not to be same pump).
- Flushing Alchatek's MixMaster slab lifting gun.

Max. Delivery:	.70 GPM
Max. Operating Pressure:	3300 PSI
Weight (skid frame):	35 lbs.
Motor:	7/8 hpDC Motor

Item #: TITAN640S



## PowrTwin 8900 Plus Electric Injection Pump

A step up for projects that requires greater power and output, the PowrTwin 8900 Plus is our best-selling hydraulic piston pump, favored by contractors who want to complete large application jobs in record time with high profit margins.

Max. Delivery, Gas:	2.35 GPM
Max. Delivery, Electric:	1.25 GPM
Max. Operating Pressure:	3600 PSI
Engine, Gas:	200 cc HP
Motor, Electric:	2.0 HP
Weight:	155 lbs

Item #: TITAN8900



## Gel Pump

The Alchatek Gel Pump is a reciprocating pump is equipped with a forced control. The material is delivered at a mixing ratio of 1:1. The big and exact operating valves provide high flow rate and high mixing accuracy. This pump is durable and easy to maintain. All material conducting parts are made of stainless steel.

Working Pressure - Infinitely Variable:	145-1450 psi (10-100 bar)
Air Pressure:	Max 116 psi (Max 8 bar)
Mixing Ratio:	1:1
Delivery Rate:	Max 0.26 gal/min (Max 8 liter/min)
Weight:	64.5 lb (29.3 kg)
Dimensions:	30.7x15.3x31.4 in (78x39x80 cm)

Item #: Special Order

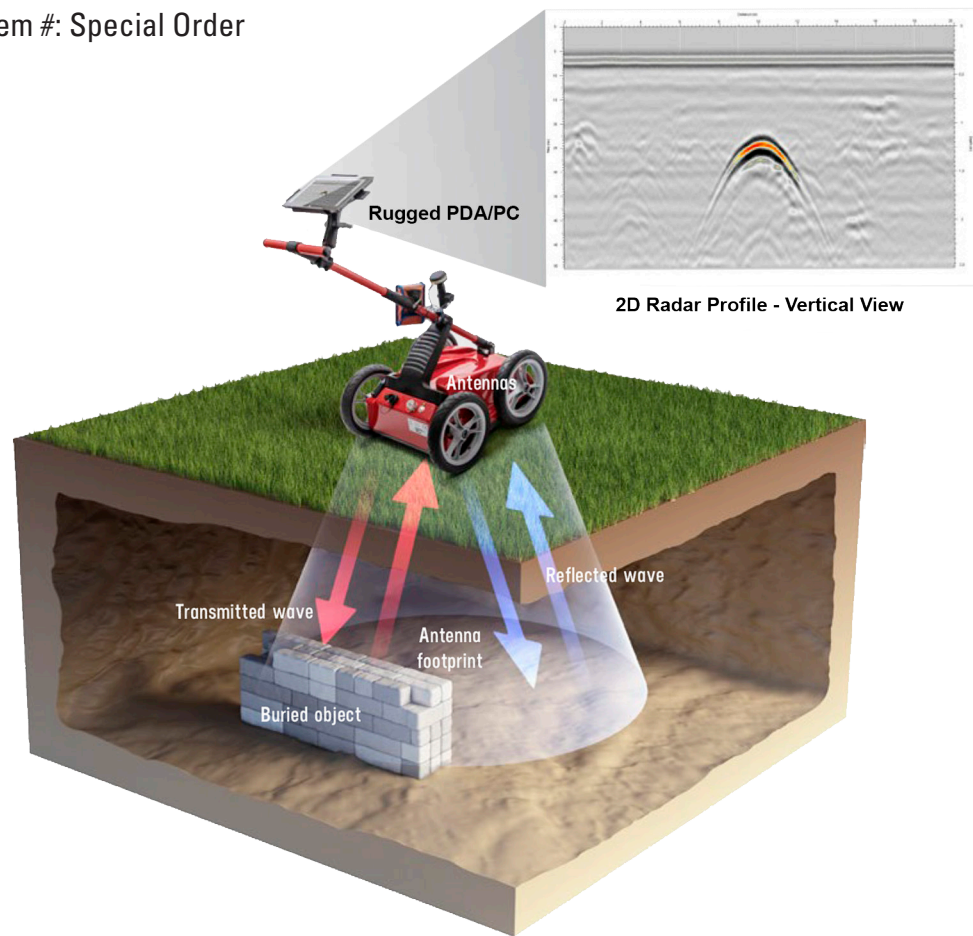
# Soil Testing

## Ground Penetrating Radar

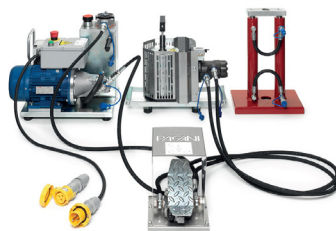
The Deep Look wireless GPR (manufactured by Radar Team) collects data from hundred thousands of pulse reflections each second to help researchers identify objects below ground.

It works in a multi frequency band from 50 to 1400 MHz, thus replacing several antennas with different frequencies used by other and older GPR systems.

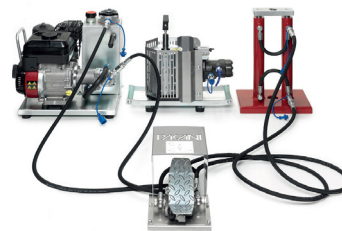
Item #: Special Order



## Dynamic Cone Penetrometer



Gasoline Engine



Electric Engine



Soil Sampler

Item #: PAG100

# Deep Soil Lifting

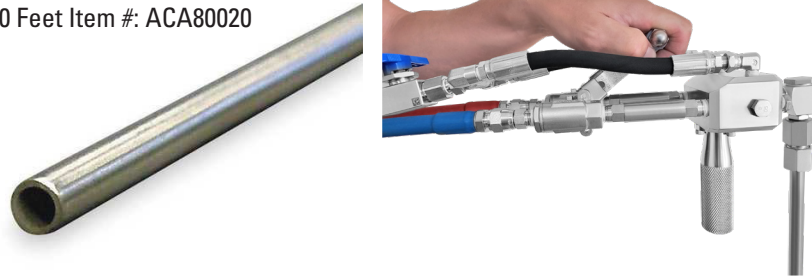
## Galvanized Soil Tubing

In order to connect to galvanized tubing to a deep soil pipe, you'll need the optional MixMaster Button Head Coupler Assembly. This replaces the Threaded Mix Chamber in the center front of the gun.

Connect button head fitting to hydraulic tubing. Slide the Button Head Coupler Assembly over the Button Head Fitting and begin to inject. Although the fitting may seem loose when you first slide the Button Head Coupler Assembly over it, it will provide a leak tight seal.

10 Feet Item #: ACA80010

20 Feet Item #: ACA80020



## Cleaner, Flush, Soak, Lube & Protectant

### Alchatek Pump Flush

Non-flammable solvent for cleaning uncured polyurethane from injection equipment.

1 Gallon Unit Item #: 121M001

5 Gallon Unit Item #: 121M005

### Alchatek Surface Guard 125

Coating for preventing polyurethane stains on concrete surfaces.

5 Gallon Unit Item #: 125M005

### Alchatek Soak 130

Cleaner for cured resin on metal components.

1 Gallon Unit Item #: 130M001

### Alchatek MixMaster Gun Cleaner 160

Liquid isocyanate and polyurethane remover.

Kit (5 Gallon Unit with Pump and Dispenser Gun) Item #160K005

Replacement 5 Gallon Unit Item #: 160M005

### Alchatek Lube 190

Pump lubricant and ISO neutralizer.

1 Gallon Unit Item #: 190M001

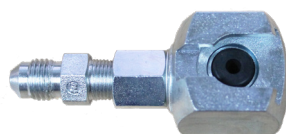
5 Gallon Unit Item #: 190M005

### Alchatek Pump Saver 195

Pump lubricant and protectant.

5 Gallon Unit Item #: 195M005

## Button Head Coupler Assembly



Item #: ACA601

## Mix Chamber Assembly



Item #: MM103A

## MixMaster Flush Pot Assembly



Item #: MM165

# Geotech Accessories

## Jack Attack System



Leverage device for positioning small to medium slabs into place while lifting or stabilizing with polyurethane. Easy for one person to operate. Triangular steel frame. 2 included in each system.

Item #: ACA765

## Alchatek SlabSeal 142



High-performance, single-component, moisture-cure, ultra-low modulus silicone sealant. For sealing stationary or moving cracks and joints in concrete. Available in beige and gray.

Item #: 142R020B - Beige  
Item #: 142R020G - Gray

## Dial Indicator



Provides real-time lift measurement during the concrete slab leveling process.

Item #: ACA650

## Grey Plastic Button Head Packer w/ Sleeve



5/8" x 4" grey plastic button head packer with sleeve. Buttonhead top. Bag of 100.

Item #: ACP2102

## AP Gel Patch



Polymer modified, cementitious patching material. For structural repair of concrete. 50 lb bag.

Item #: 1030M050

# Geotech Accessories (Continued)

## Button Head Fittings



AP Button head fittings  
(1/4' NPT x 5/8').  
Bag of 100.

Item# ACA570

## Button Head Coupler



5/8" slide coupler.

Item #: HW255

## Injection Tubing Assembly



1/2" Tubing injection assembly.  
Consists of nut, ferrule, and  
button head adapter.

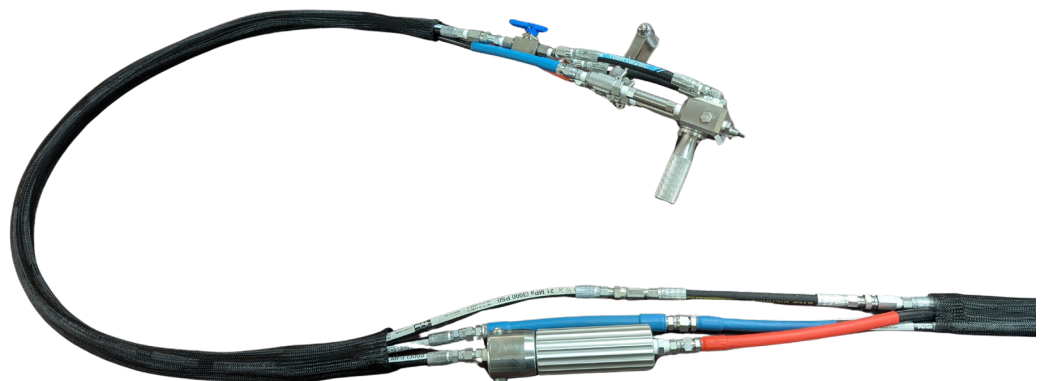
Item#: ACA810

---

## A-Side In-Line Filter

The A-Side In-Line Filter for slab lifting applications is a critical component designed to prevent crystallization chunks, debris, or contaminants from reaching the slab lifting gun, which could clog the system and disrupt operations.

Item#: ACP901





Alchatek, LLC  
4508 Bibb Blvd, Suite B5  
Tucker, GA 30084  
Phone: (404) 618-0438  
**Alchatek.com**

This information is provided in good faith, but without guarantee. The application, use and processing of the products are beyond our control and therefore your entire responsibility. Should Alchatek nevertheless be held liable for any damage, such liability will be limited to the value of the goods delivered by us. We are committed to providing high-quality goods at all times. This version supersedes all previous versions. Revision Date: November 20, 2025 9:23 am